

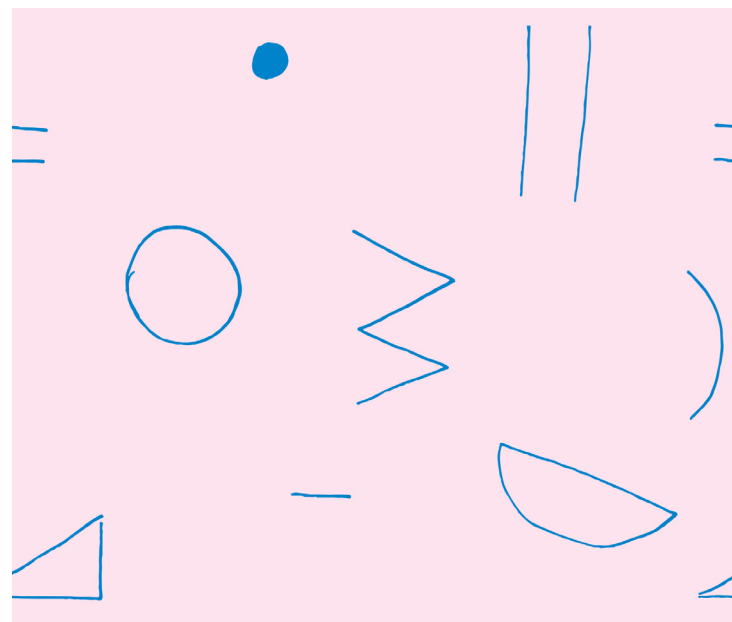
SWEVEN
JAMIE LEA BERTSCH



SKETCH OCHRE



SKETCH TAFFY



SKETCH BLUEBERRY



SWEVEN
BY JAMIE LEA BERTSCH

Jamie is a surface designer and artist who is a connoisseur of texture, color and sensation—exhilarated by observation, connection, and the daily experience. You can typically find her arranging things nicely in her studio, and finding new color relationships in the process.

Working on a multitude of projects ranging from block printing to weaving, patterns are innate to her process. The tactile and haptic nature of her surface designs work together in harmony to create an experience that is both grounding and inspiring. This is the energy she pulls from in her daily practice, compiled here.



COLLECTION

ABSTRACT RELATIONSHIPS

Practicing the art of noticing, I return to my studio, porch, or sunsoaked kitchen chair to design these collections. I'll begin by putting on the coffee, gathering the photos, the moleskine notes, the haptic memories. I'll remember a color palette—one that I've recently woven with, painted with, or dreamt about, and work from there. Marks develop, they intermingle, integrate, and drive my process. Everything informs everything.



ABSTRACT DUSK



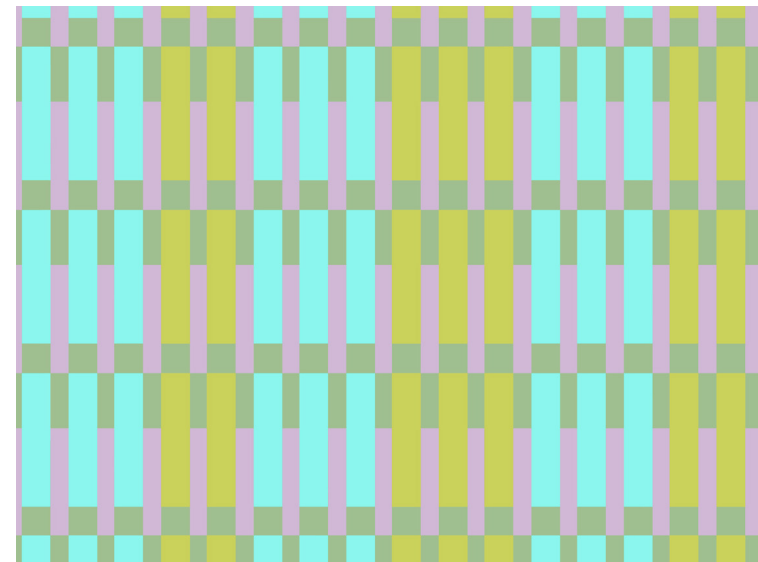
ABSTRACT ACAI



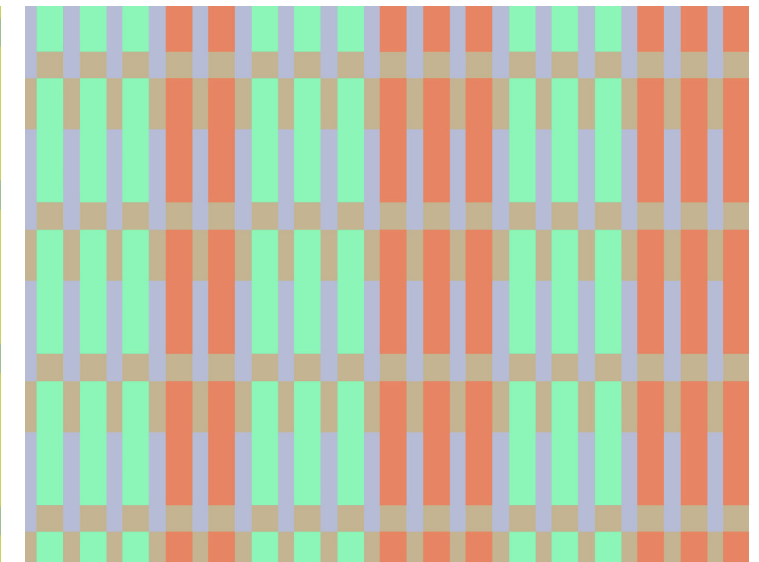
ABSTRACT BEET



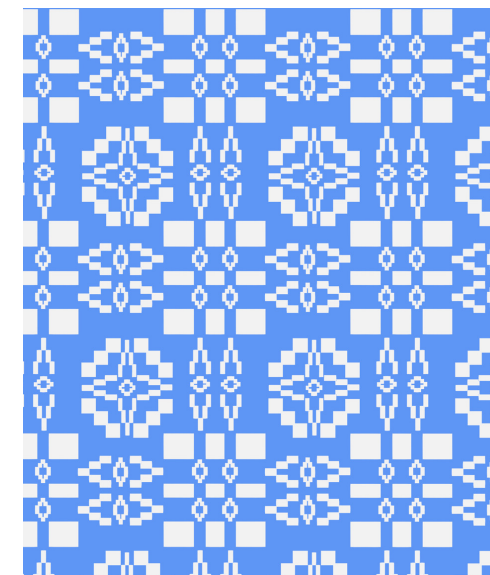
ABSTRACT DAWN



SCANDI SAGE



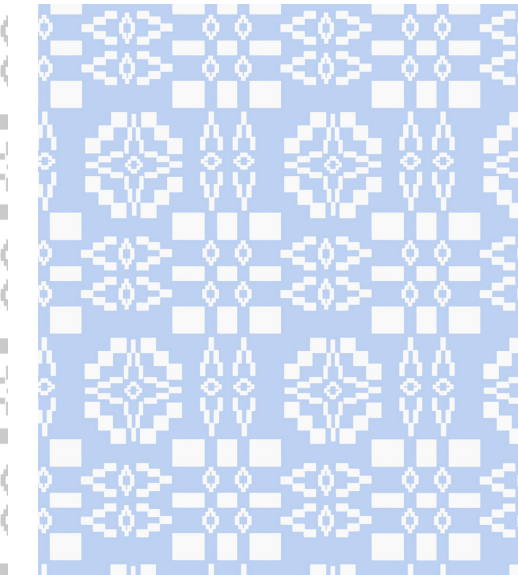
SCANDI PERSIMMON



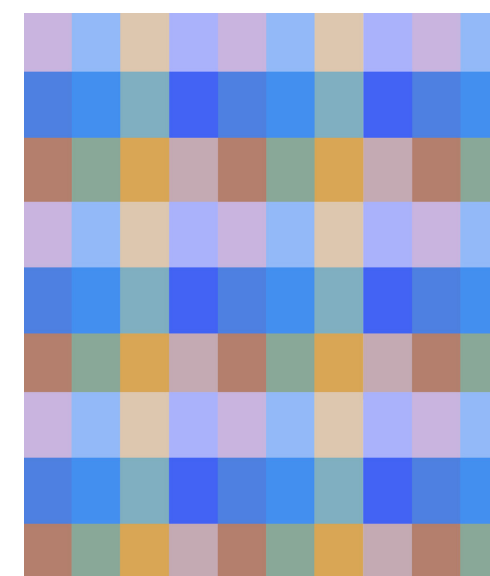
SCANDI CORNFLOWER



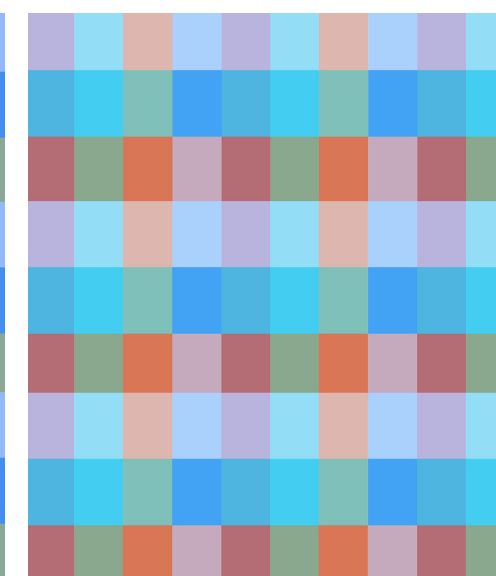
SCANDI SLATE



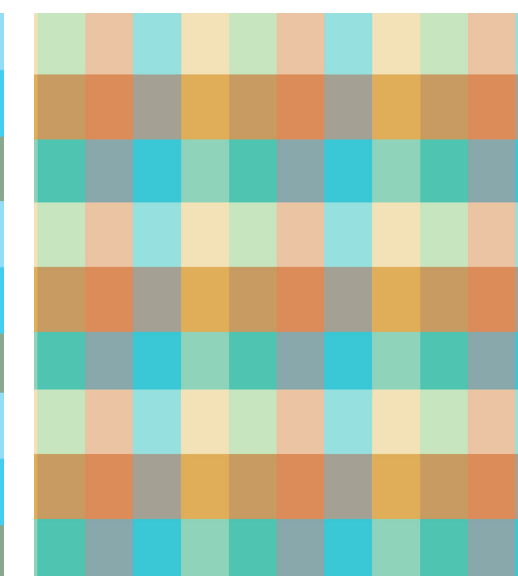
SCANDI MORNING GLORY



SCANDI MAUVE



SCANDI TOMATO

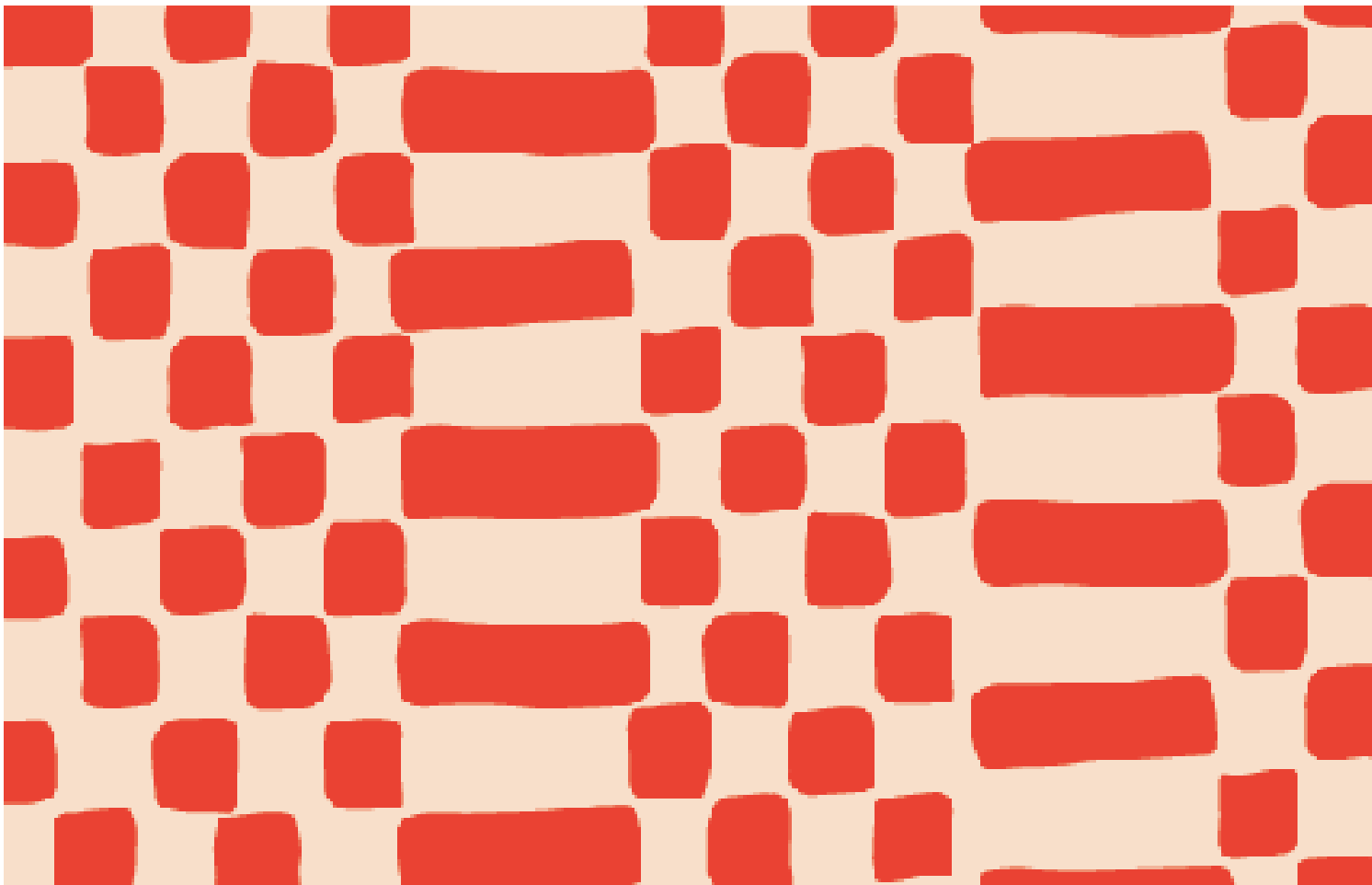


SCANDI CLAY

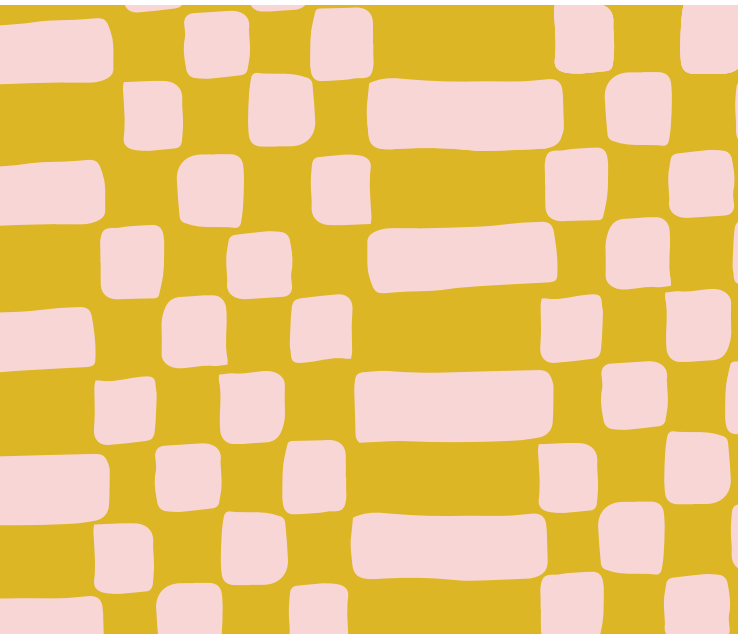


COLLECTION

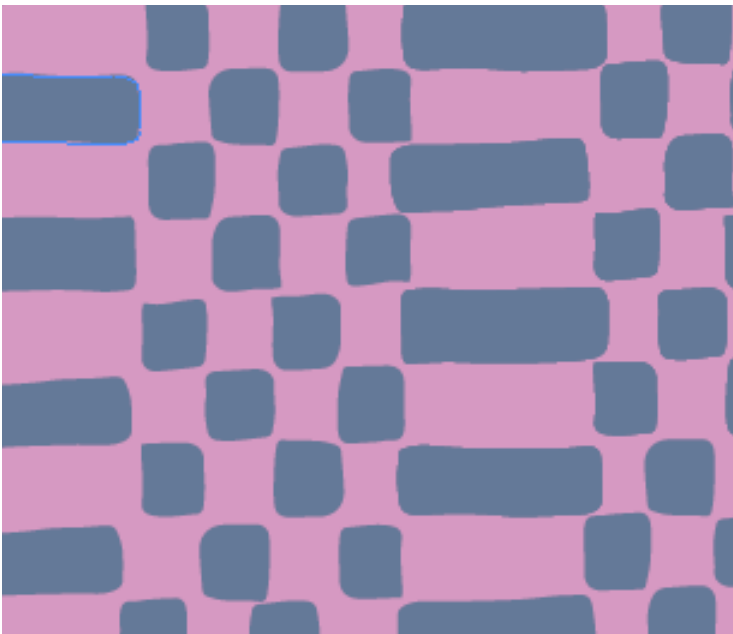
MINIMAL CHECK



POPPY



MARIGOLD



ELDERBERRY

COLLECTION

ABSTRACT MARKS



BEET



ACAI



LIMAL



COLLECTION

BESPOKE



PEPPER



PERSIMMON



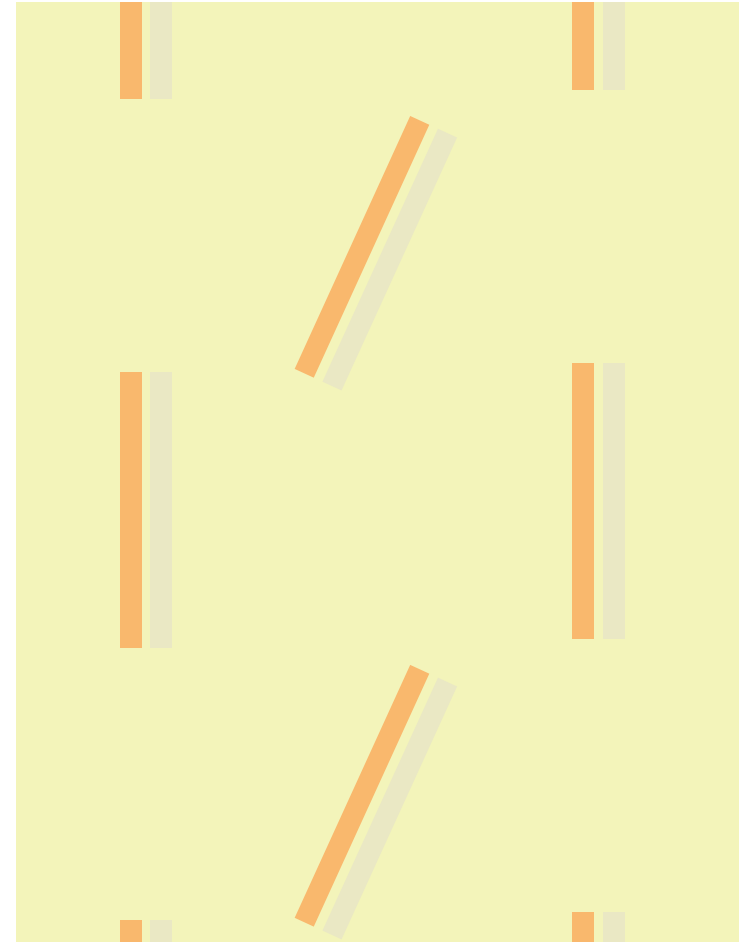
EARTH



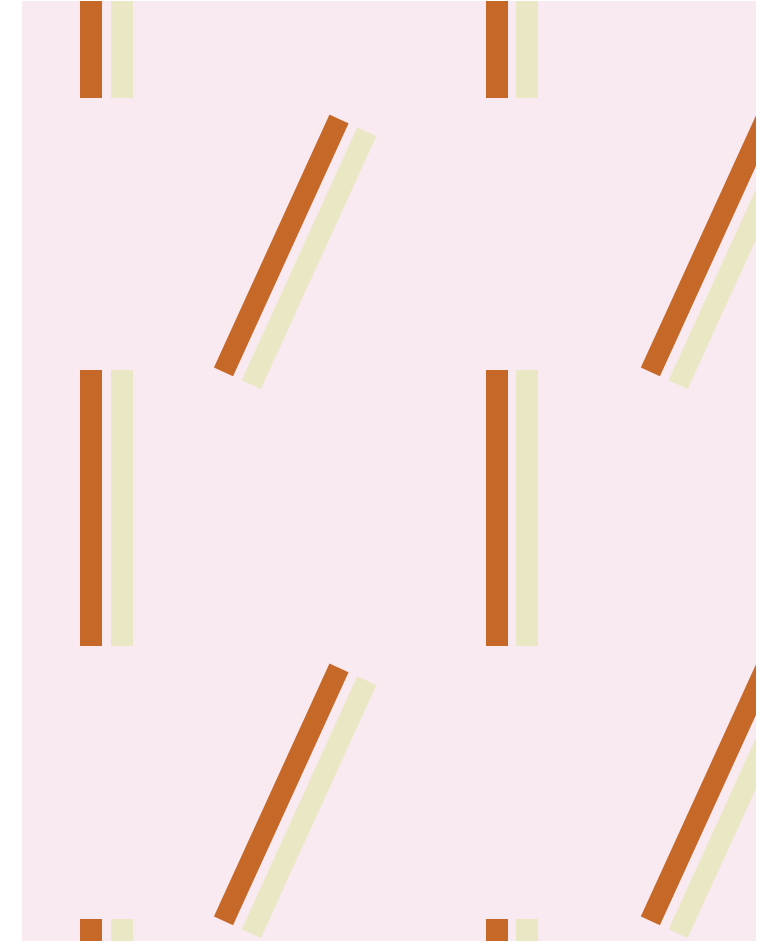
PISTACHIO

COLLECTION

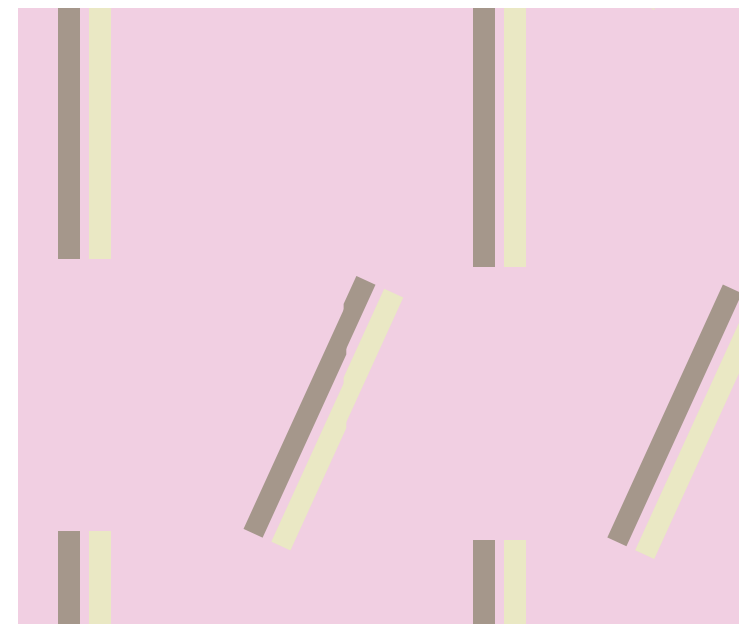
MOD SPRINKLE



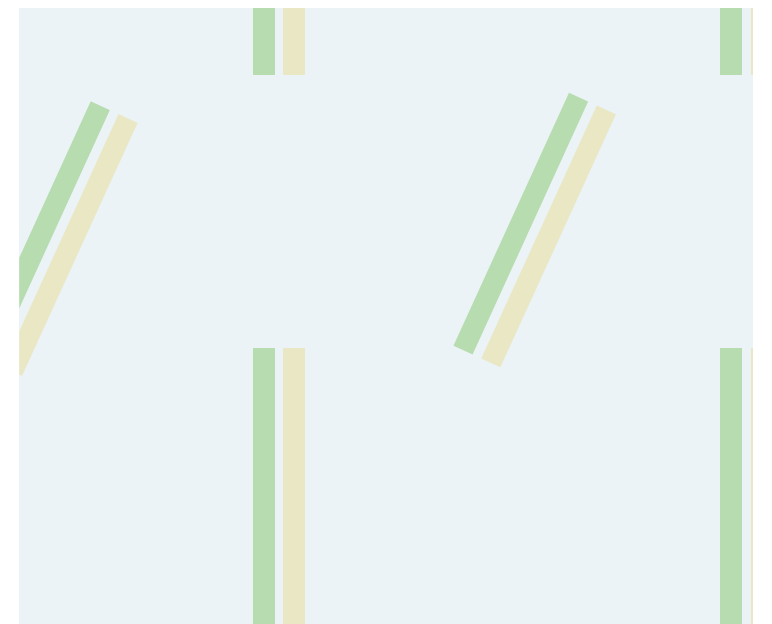
MERINGUE



SCHAUM



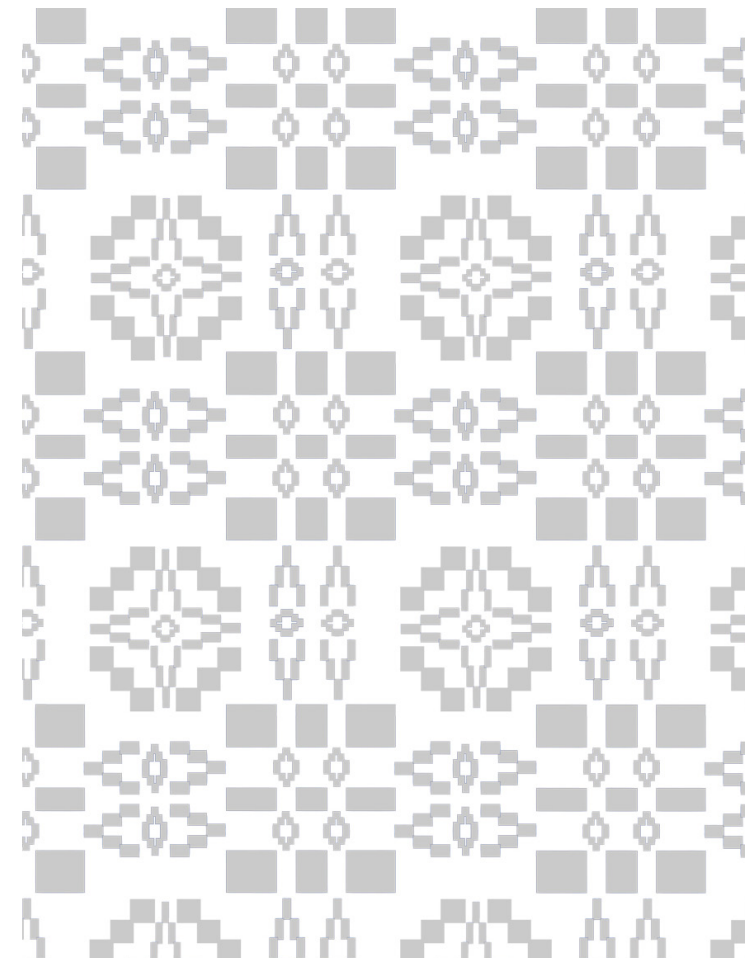
PLUM



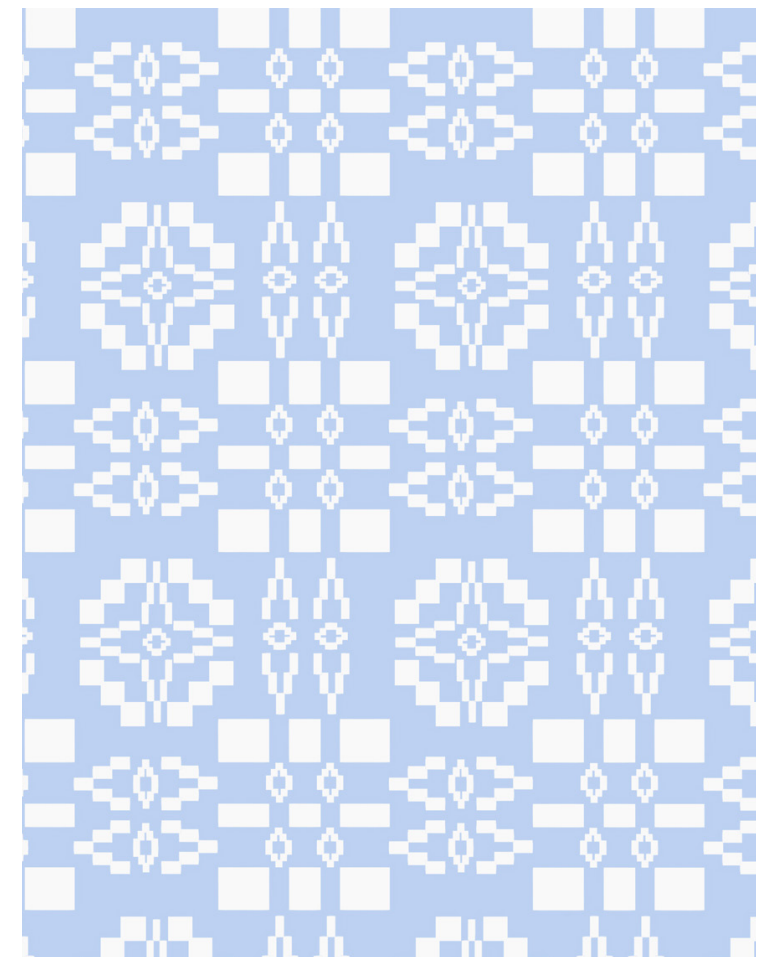
MINT

COLLECTION

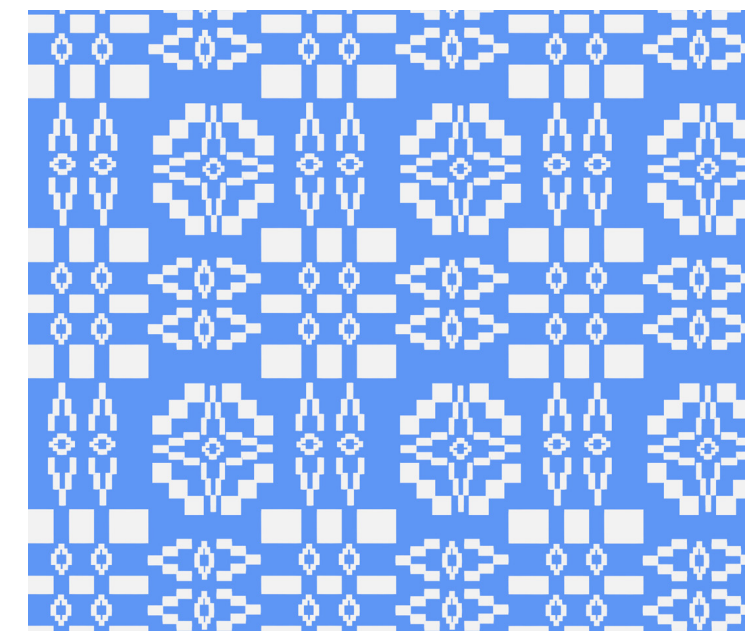
SCANDINAVIAN COVERLET



SLATE



MORNING GLORY



CORNFLOWER



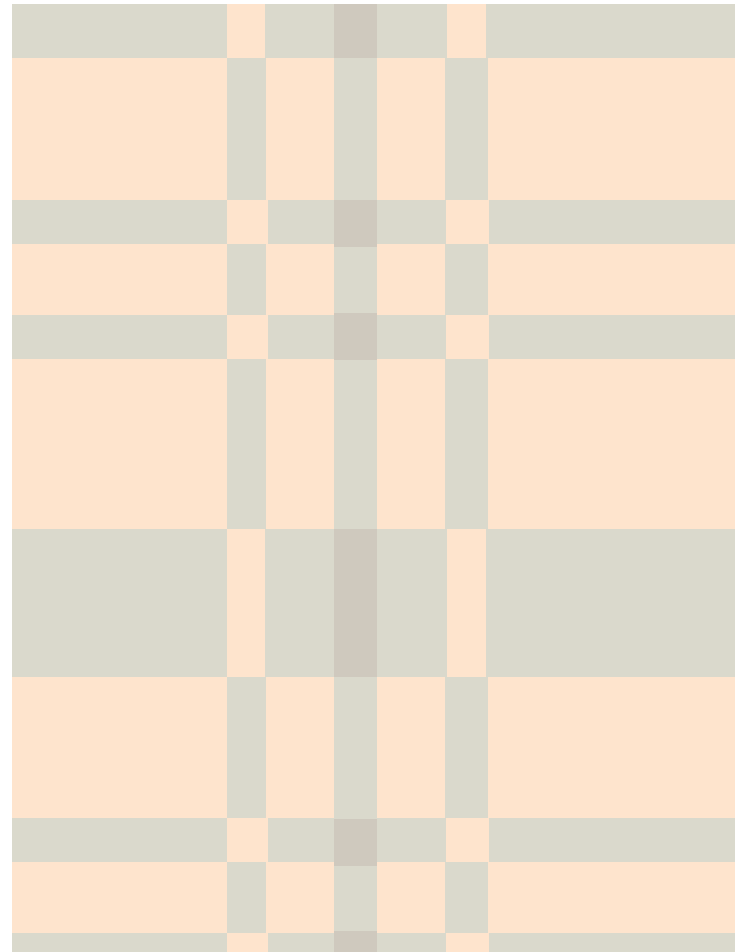
DUNE



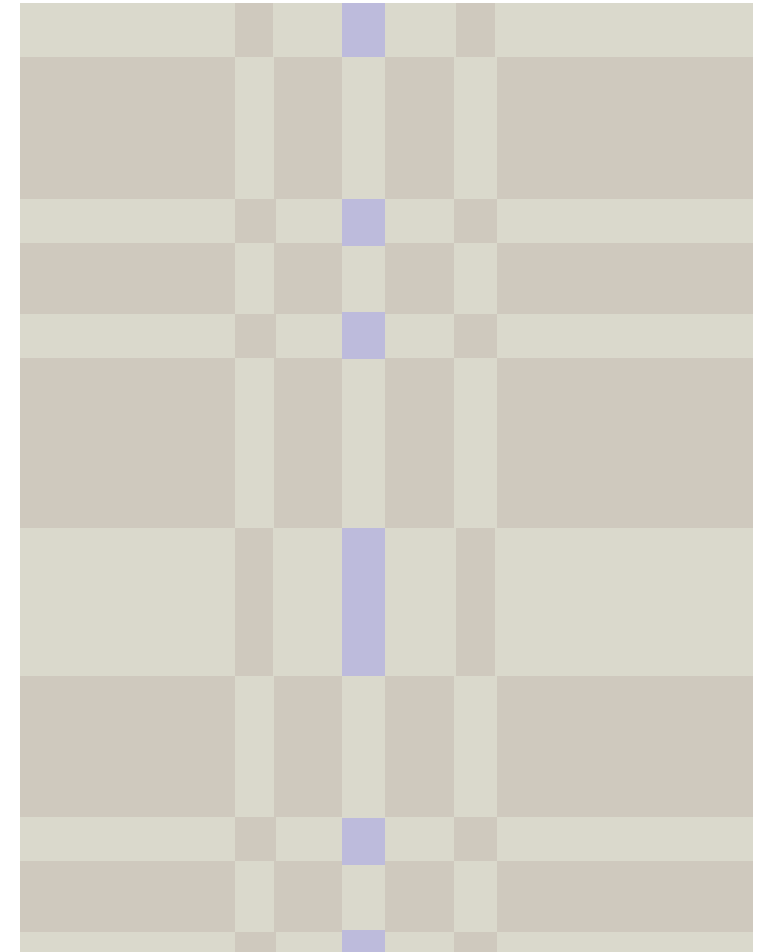


COLLECTION

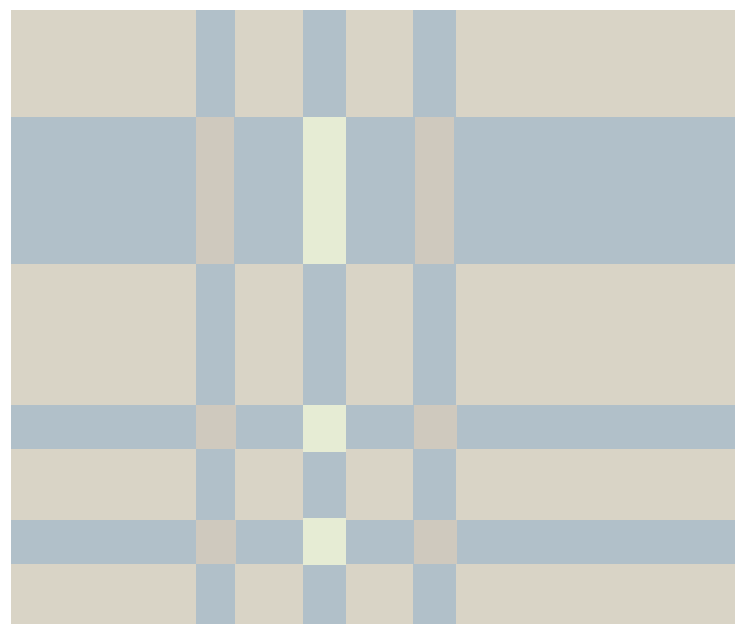
JACQUARD PLAID



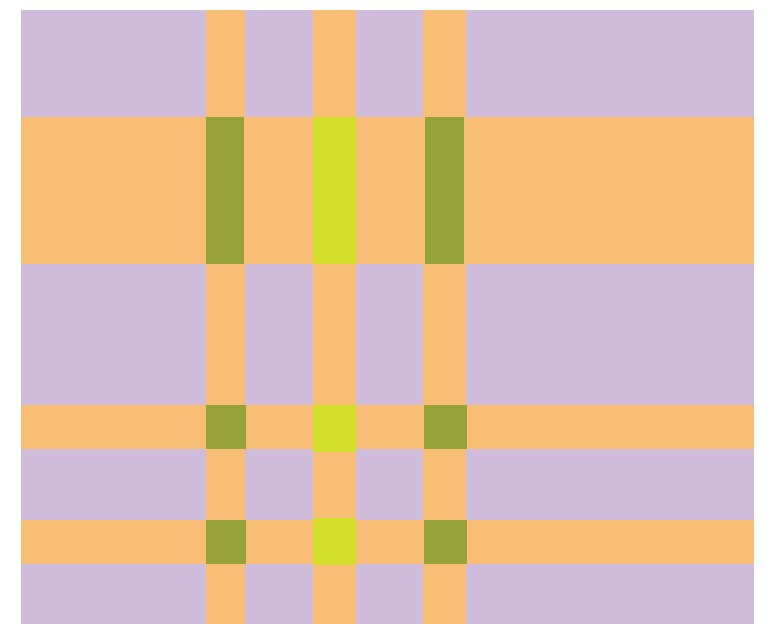
SALMON



STONE



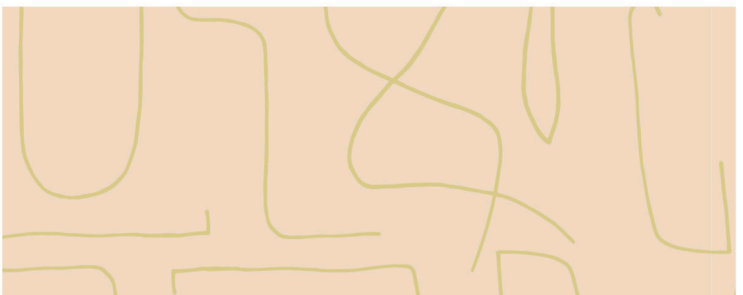
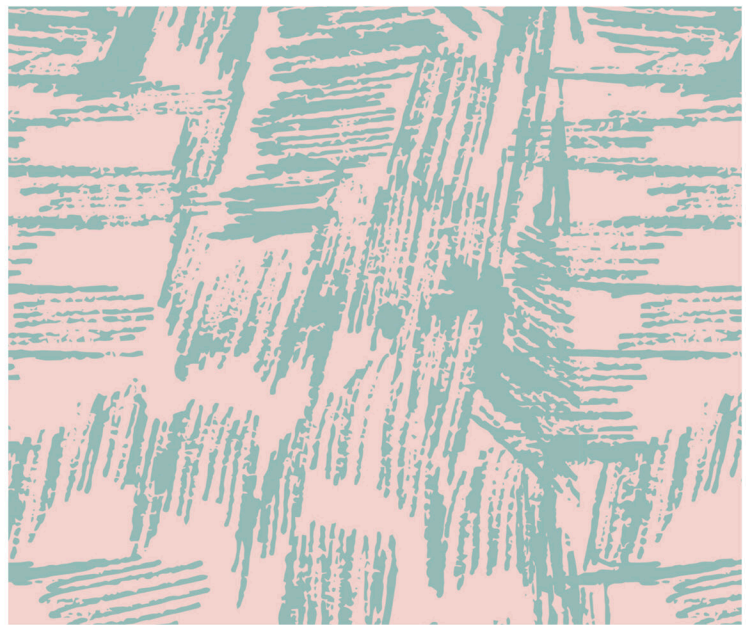
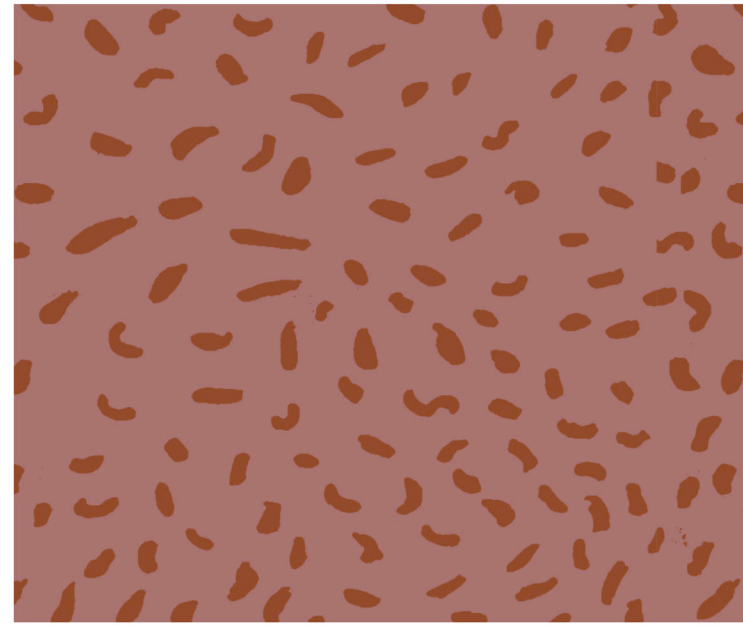
SKYE



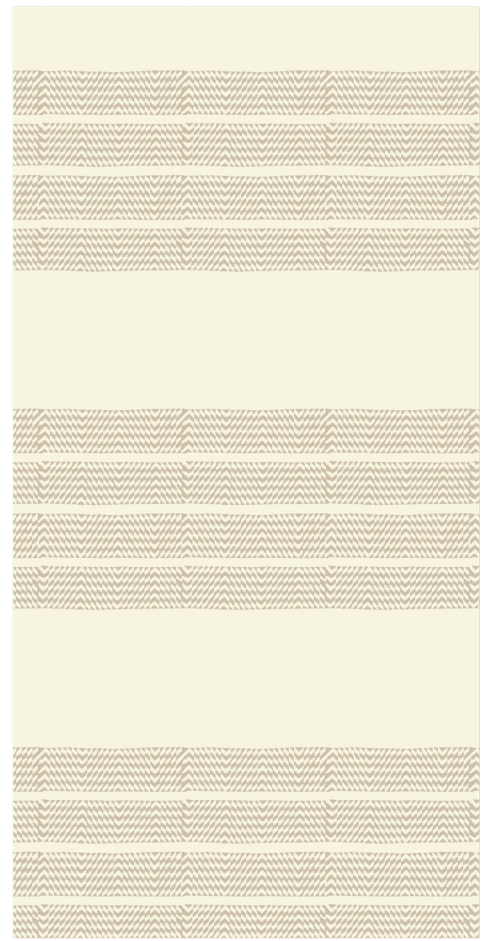
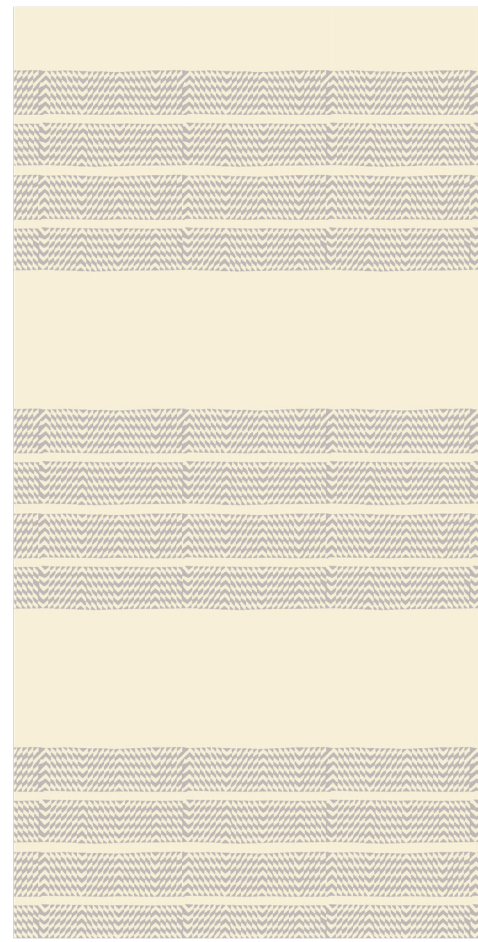
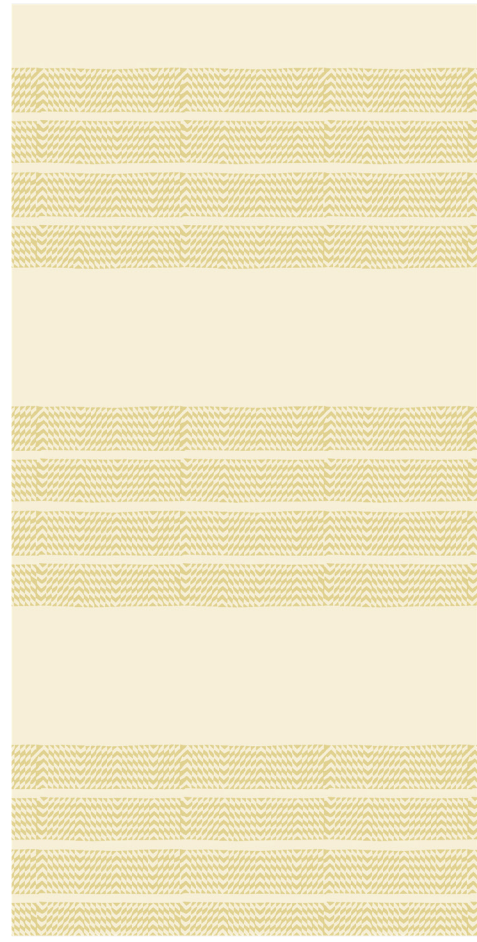
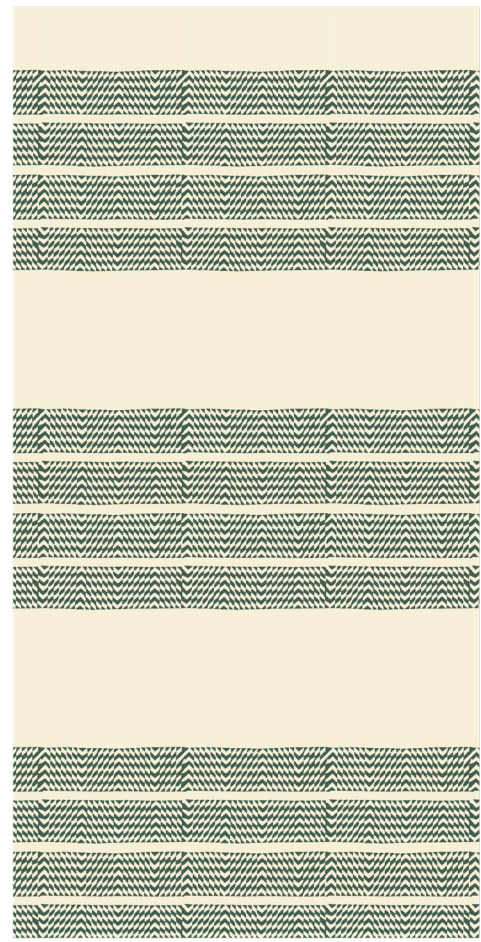
WISTERIA

COLLECTION

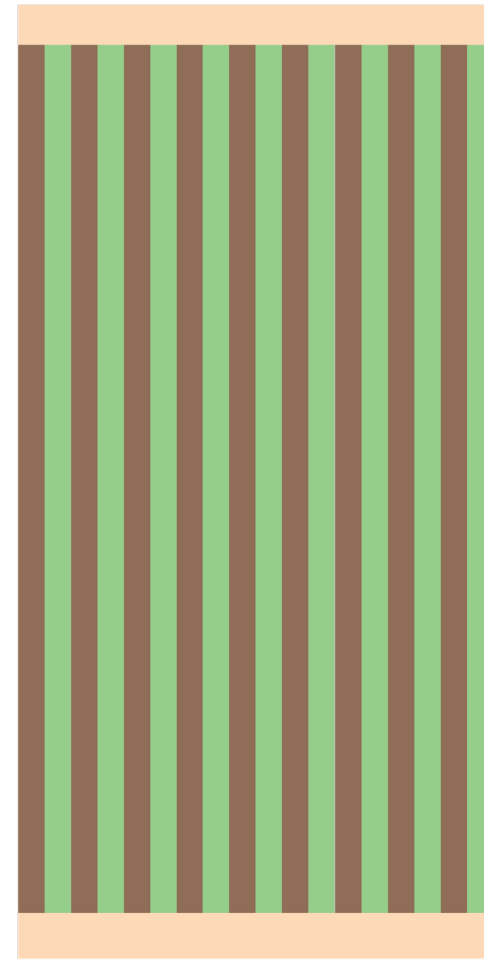
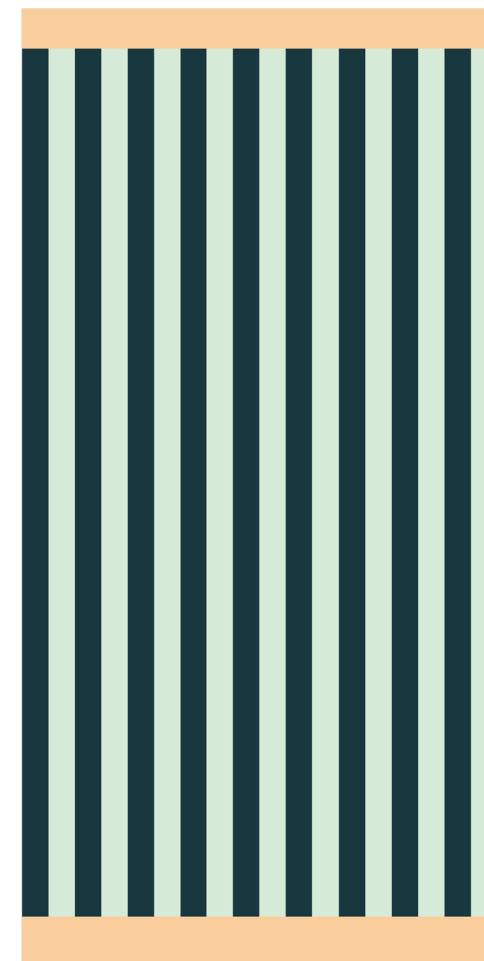
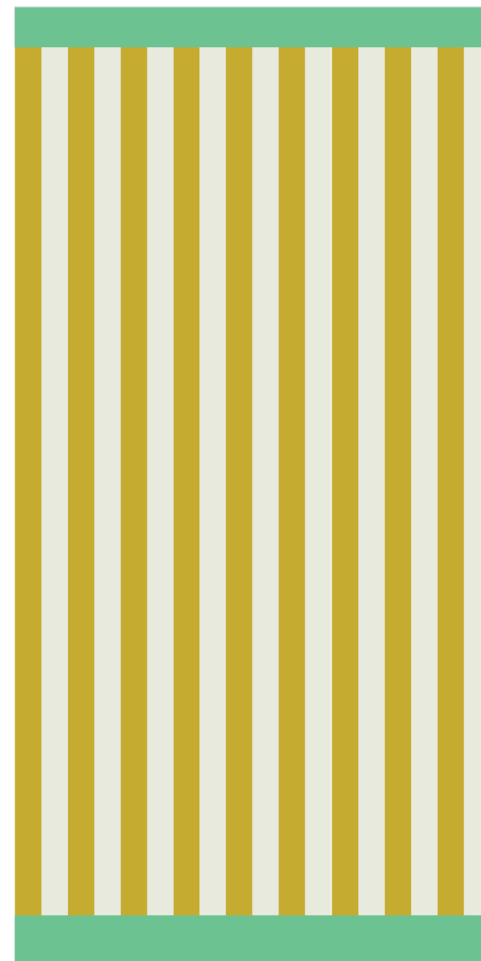
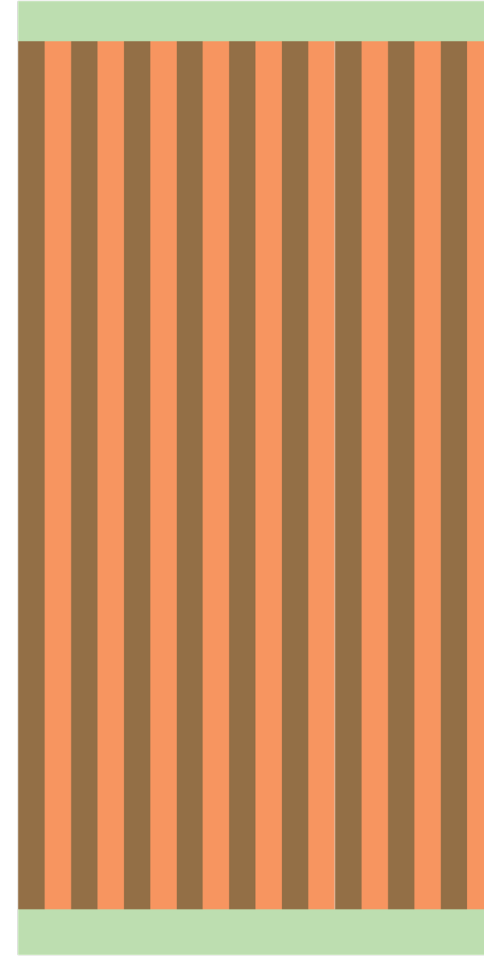
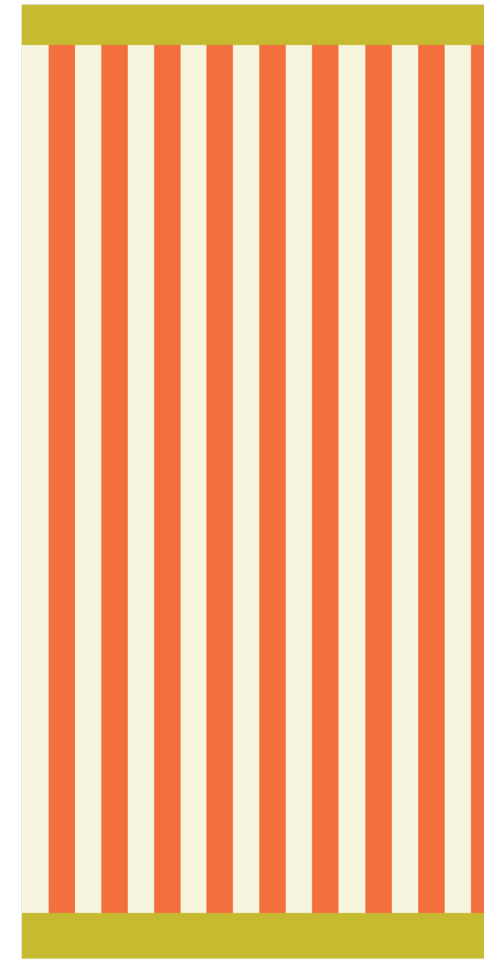
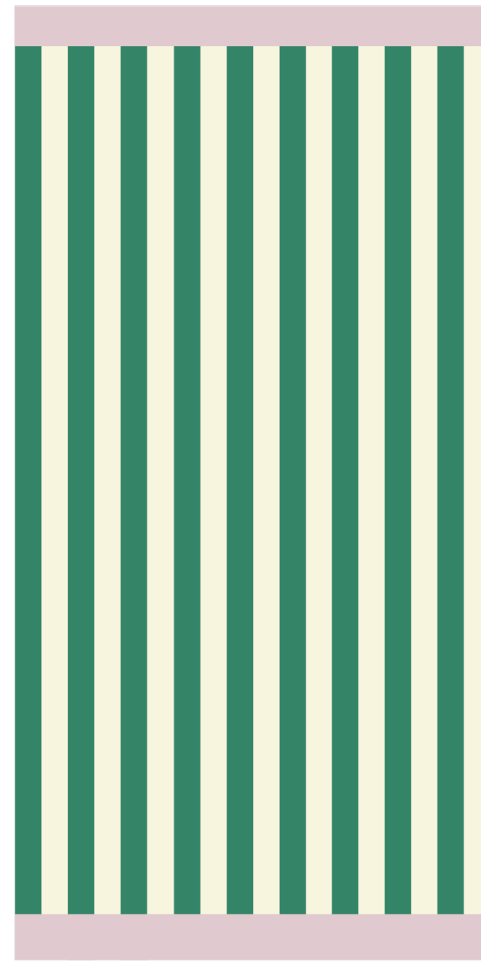
SKETCHBOOK I



COLLECTION WOVENS



COLLECTION SIMPLE STRIPE



SWEVEN
BY JAMIE LEA BERTSCH

Jamie is a surface designer and artist in Port Washington, Wisconsin. To inquire about licensing her patterns, please email: jamiebertsch@gmail.com

You can view more of her work at www.instagram.com/sweven.studio

visit her website at:
www.jamieleabertsch.com